



Annual Report



Photo: Tyndale St-Georges Community Center



Photo: Fondation de la Visite

20
25

Summary

Letter from Chamandy Foundation Leadership	03
Mission and Values	04
Our Five-Year Strategic Plan: 2024—2029.....	06
Showcasing Those We Support: A Look at Our Funding Areas	08
Healthy Bodies & Minds	09
Safe Housing	12
Engaged Education	15
Nurturing Communities	18
Employee Donations and Emergency Fund	21
Championing Equity: Our JEDI Commitment and Leadership Recognition	22
Team, Board of Directors and Officers	23
10 Years of Chamandy Foundation: A Retrospective in Pictures	24
Thank You	28



Acknowledgement

Chamandy Foundation is located on unceded Indigenous lands, of which the Kanien'kehá:ka Nation is recognized as a custodian. Tiohtiá:ke/Montreal is historically known as a gathering place for many First Nations. Today, it is home to a diverse population of Indigenous and other peoples.

We commit to work daily for the rights of Indigenous peoples through our actions, advancing reconciliation, and supporting the leadership and capacity-building of Indigenous communities.



Letter from Chamandy Foundation Leadership

Staying Close to Communities, Driving Meaningful Change

2025 marked ten years since the founding of Chamandy Foundation. We are deeply proud of the work we have had the privilege to support and the communities we have been honoured to work with over the past decade. Since our first grant in 2015, the Foundation has awarded more than 32M in funding, supporting over 200 organizations across Canada. To mark this milestone, we invite you to explore a photographic retrospective at the end of this report, celebrating ten years of shared purpose and collective effort.

This anniversary also comes at a time of significant economic and social pressure for communities across the country. Rising costs, stretched public systems, and increasing demand for services continue to place strain on the organizations working closest to children, youth, and families. Against this backdrop, the record number of applications received during our 2025 Call for Proposals reflects both the depth and the urgency of need. Across all funding areas, requests highlighted persistent challenges, particularly in mental health, food security, housing, and access to after-school supports.

Each application was reviewed with care and rigor, guided by our funding priorities and by a responsibility to steward resources thoughtfully. Through this process, we identified initiatives with which we could meaningfully collaborate, seeking to ensure that our funding reaches organizations well positioned to respond to immediate needs while contributing to longer-term, sustainable change.

Staying responsive in this environment requires ongoing learning and connection. The Foundation team remains actively engaged in philanthropic committees and peer-led networks that provide space for funders to exchange ideas, address shared challenges, and strengthen collective understanding of the sector. At the same time, we believe our greatest strength lies in our proximity to the organizations we support. Through regular conversations and ongoing relationships, we remain closely connected to the realities facing these organizations and the communities they serve. This approach reflects our commitment to trust-based philanthropy, grounded in the understanding that organizations closest to the work are best positioned to determine how resources can be used most effectively.

Together, we continue to build relationships that support community leadership, strengthen organizations, and respond to the pressing issues that demand our collective attention.



Tiffany Chamandy

President and Executive Director



Glenn J. Chamandy

Secretary and Director

Our Mission

Strengthening Communities Through Trust-Based Philanthropy

MISSION

To nourish every facet of marginalized children and youth, encompassing their physical and intellectual well-being, community engagement, and environmental stewardship, so they can grow into their full potential.

VISION

A world where children of all walks of life thrive today, as the future leaders of tomorrow.

VALUES

Intersectional

We recognize that individuals can experience multiple forms of discrimination or privilege based on intersecting social identities such as ethnic groups, gender, sexuality, class, and ability.

Intentional

We take purposeful and deliberate action towards achieving specific goals or outcomes, particularly in addressing funding gaps and disparities.

Flexible

We are adaptable and responsive to changing circumstances, needs, and opportunities.

Relational

We emphasize the importance of building and nurturing authentic, respectful, and trust-based relationships with grantees.

Caring

We demonstrate compassion, empathy, and concern for the well-being of others.

Trust-Based Philanthropy is Central to Chamandy Foundation's Approach.

Grounded in mutual respect, transparency and collaboration, our approach enables frontline organizations to focus on their core missions and deepen their impact within communities. Through trust-based and equitable practices, we reduce barriers, value local expertise and support sustainable change for children, youth and their communities.

By staying closely connected to the field, we ensure that the voices of those most affected inform and shape our actions.

Strengthening Communities Through Strategy

As Chamandy Foundation completes the second year of its Five-Year Strategic Plan, our grantmaking continues to be guided by a deep respect for the expertise that exists within communities. The plan centres community-led organizations advancing the well-being of children, youth, and the networks that support them, and reflects an ongoing commitment to trust-based philanthropy.

This year marked an important evolution in how the Foundation is able to support this work. Updates to our charitable objects now allow us to grant directly to non-qualified donees*, removing barriers that have historically limited access to funding for grassroots organizations. This shift enables closer collaboration with organizations embedded in their communities.

In alignment with our funding priorities, the Foundation continues to make thoughtful and, at times, difficult decisions about where our resources can be most effectively disbursed. While we do not have a standalone environmental funding stream, environmental and climate considerations are integrated across our funding priorities. We remain attentive to the growing impact of climate and environmental challenges on children, youth, and communities, and factor these realities into our funding decisions whenever possible.

Our funding approach is guided by an intersectional lens, recognizing that overlapping identities and systemic barriers shape lived experiences and access to opportunity. This ensures that organizations working closest to the challenges faced by children and youth have the resources and autonomy they need to respond, adapt, and lead.



Key Highlights of the Plan

+ **Focus** → Grassroots, community-led organizations.

+ **Flexible Funding: Single and Multi-Year Support to Strengthen**

- Core Missions and Operations
- Frontline Services
- Capacity Development
- Advocacy Efforts

+ **Target Populations**

Children and youth up to 35 years old, with emphasis on those with disabilities, newcomers, BIPOC, 2SLGBTQAI+, youth in and aging out of care, the unhoused, or low-income families.

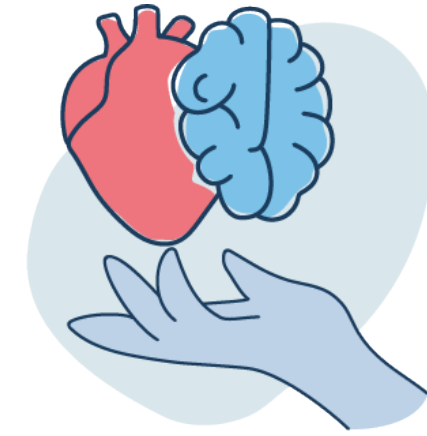
*The term “non-qualified donees” is used by the Canada Revenue Agency to describe organizations that do not have charitable status, such as non-profits and grassroots organizations.



Photo: Toujours ensemble

Showcasing Those We Support





Healthy Bodies & Minds

Through its *Healthy Bodies & Minds* funding pillar, Chamandy Foundation invests in initiatives that strengthen physical and mental wellness across the lifespan.

By supporting healthy pregnancies, early childhood development, mental health and culturally appropriate care, we help foster healthier, more equitable communities.

Healthy Bodies
& Minds

Grants Awarded 2025

● 1 year

● 2 years

● 3 years



Photo: Ferme Jeunes au travail

2025

2026

2027

2028

Café social du Centre - \$55,000

Monthly Dignity - \$40,000

Sirivik - \$50,000

Children's Health Foundation - \$60,000

Elsipogtog First Nation School - \$80,000

Ferme Jeunes au travail - \$50,750

La Maison des jeunes L'Escalier de Lachine - \$40,600

Teresa Dellar Palliative Care Residence - \$100,000

BASE — Banque Alimentaire Services Entraide - \$154,545

Fondation Papillon - \$120,000

Kids Eat Smart Foundation Newfoundland and Labrador Inc. - \$60,000

Healthy Bodies
& Minds

Grants in Progress

● 2 years

● 3 years

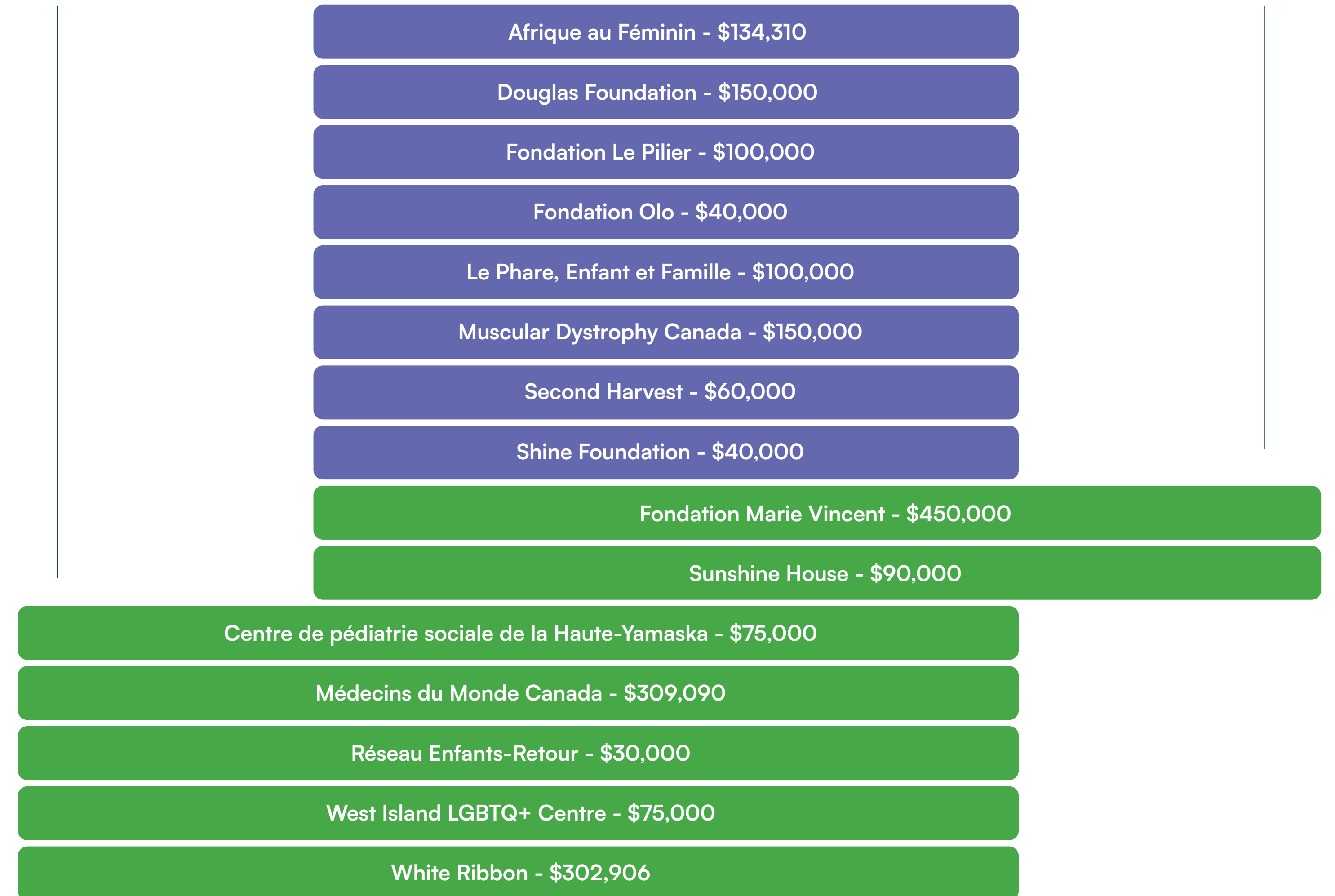
2023

2024

2025

2026

2027





Safe Housing

Through its *Safe Housing* funding pillar, Chamandy Foundation invests in emergency, transitional and sustainable housing initiatives.

By supporting safe and stable environments, we help children, youth and families reduce housing insecurity and create pathways toward lasting change.

Safe Housing

Grants Awarded 2025

- 1 year
- 2 years
- 3 years



2025

2026

2027

2028

The Kataujaq Society Safe Shelter - \$45,000

Maison d'hébergement pour elles des Deux Vallées - \$27,500

On Our Own (O3) - \$50,000

Tandem-Jeunesse - \$7,000

Youth Impact Jeunesse - \$15,000

La Source Soleil - \$64,312

Holistic Afro Youth Centre - \$126,000

L'ADOberge Chaudière-Appalaches - \$150,000

Maison LI-BER-T House - \$210,000

Safe Housing

Grants in Progress

- 2 years
- 3 years
- 5 years

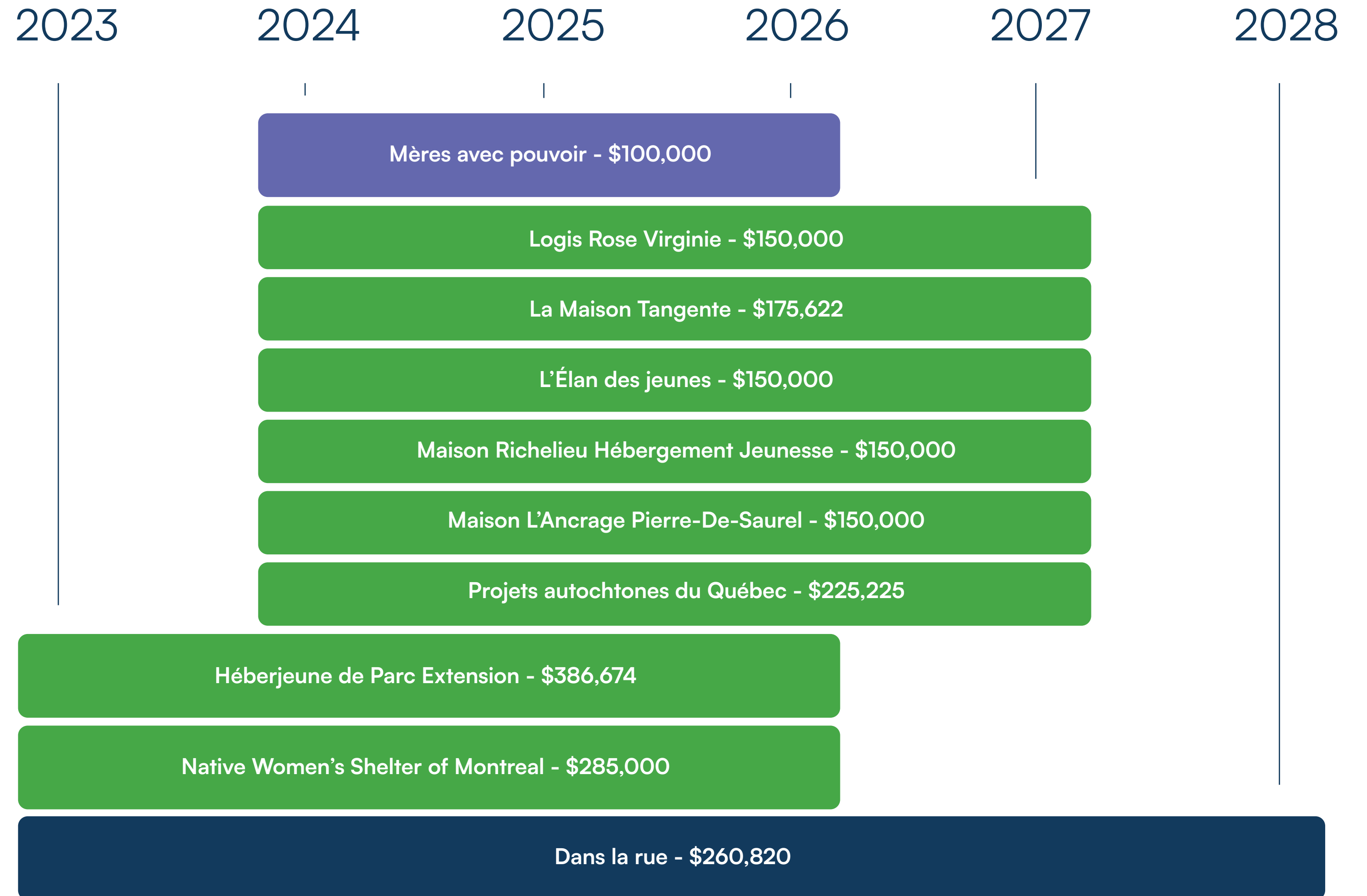




Photo: Environmental Leadership Canada



Engaged Education

Through its *Engaged Education* funding pillar, Chamandy Foundation invests in initiatives spanning early childhood education, STEM promotion, environmental learning and work integration.

By supporting programs that inspire and equip children and youth, we contribute to a brighter and more equitable future through education.

Engaged
Education

Grants Awarded 2025

● 1 year

● 2 years

● 3 years



Photo: Pour 3 Points

2025

2026

2027

2028

Environment Leadership Canada - \$60,000

Harmonie Val-des-Sources - \$16,000

Réseau CFER - \$25,000

The Gaia Project - \$45,000

Naos Jeunesse - \$60,625

Outside Lookin In - \$100,000

Pour 3 Points - \$80,945

Ruelle de l'Avenir - \$70,000

Gakino'amaage: Teach for Canada - \$100,000

Youth Climate Lab - \$81,044

Cybercap - \$60,000

École secondaire de la Ruche - \$19,500

La Converse - \$90,000

Maison des Jeunes de Fleurimont - \$129,862

Toujours ensemble - \$180,000

Engaged
Education

Grants in Progress

● 2 years

● 3 years

2023

2024

2025

2026

2027

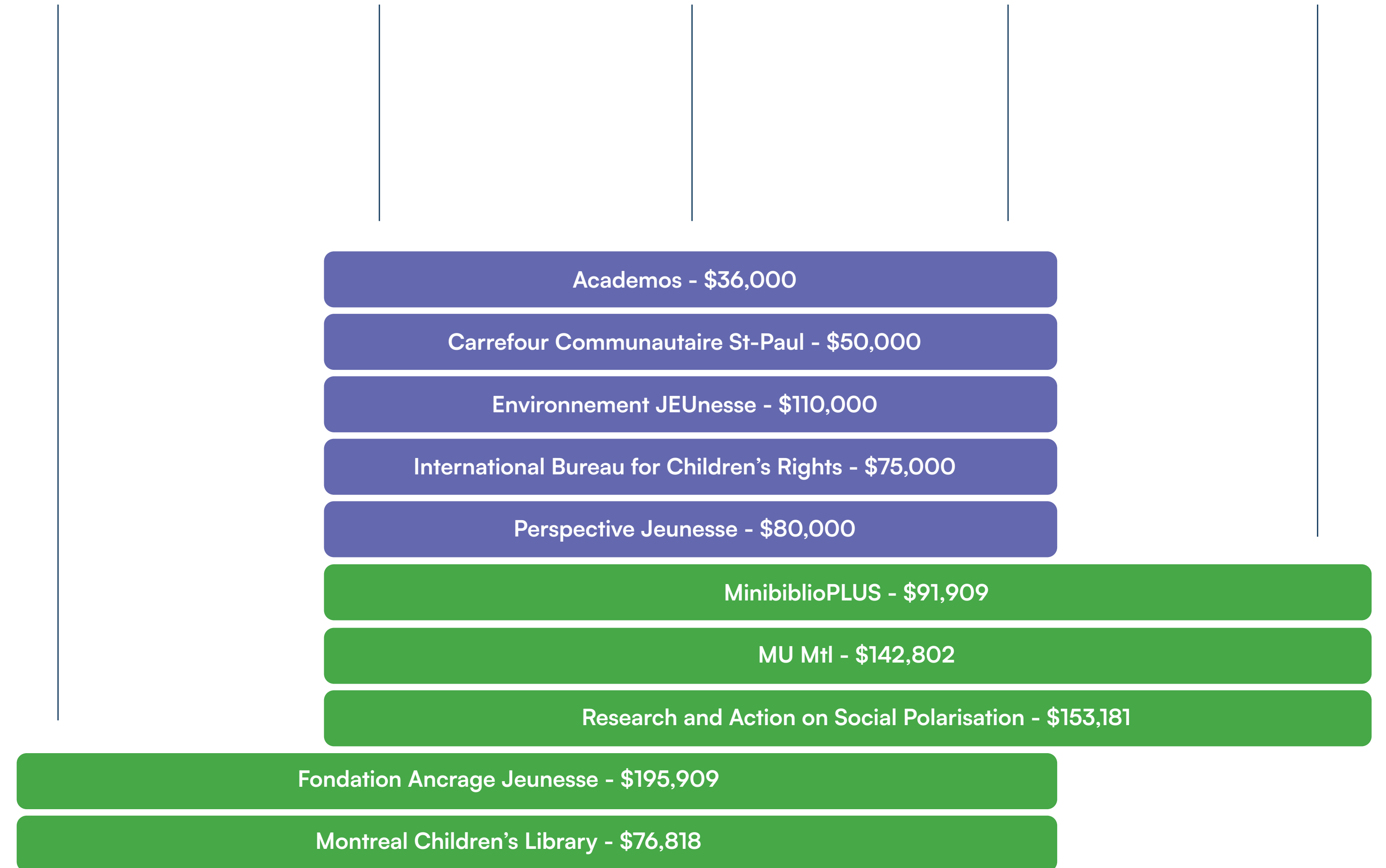
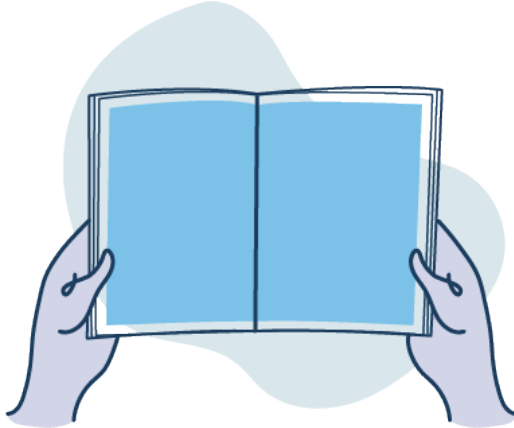




Photo: Wood Buffalo Pride



Nurturing Communities

Through its *Nurturing Communities* funding pillar, Chamandy Foundation supports initiatives that promote safety, inclusion and resilience.

By addressing sexual exploitation, violence and environmental engagement, and by investing in community-building efforts, we help create environments where individuals and families can thrive.

Nurturing
Communities

Grants Awarded 2025

- 1 year
- 2 years
- 3 years



2025

2026

2027

2028

Driftpile Cree Nation - \$50,000

Neighbours United - \$60,000

Regroupement des Fondations pour la protection
de la jeunesse du Québec - \$65,000

Regroupement pour la Trisomie 21 - \$15,000

Tyndale St-Georges Community Centre - \$60,000

Wood Buffalo Pride - \$50,000

Achieving the Dream Through Education - \$120,000

Evermore Gather Grow Lead Inc. - \$40,000

Hoodstock - \$110,000

Old Strathcona Youth Society - \$80,000

Elizabeth Fry Society of Mainland Nova Scotia - \$199,977

Fondation de la Visite - \$153,755

Jeunesse Lamba - \$169,245

The Manitoba Conservatory of Music & Arts - \$30,000

The Welcome Collective - \$105,000

Ulnooweg Education Centre - \$180,000

Woodland Cree First Nation - \$105,000

Nurturing
Communities

Grants in Progress

● 2 years

● 3 years

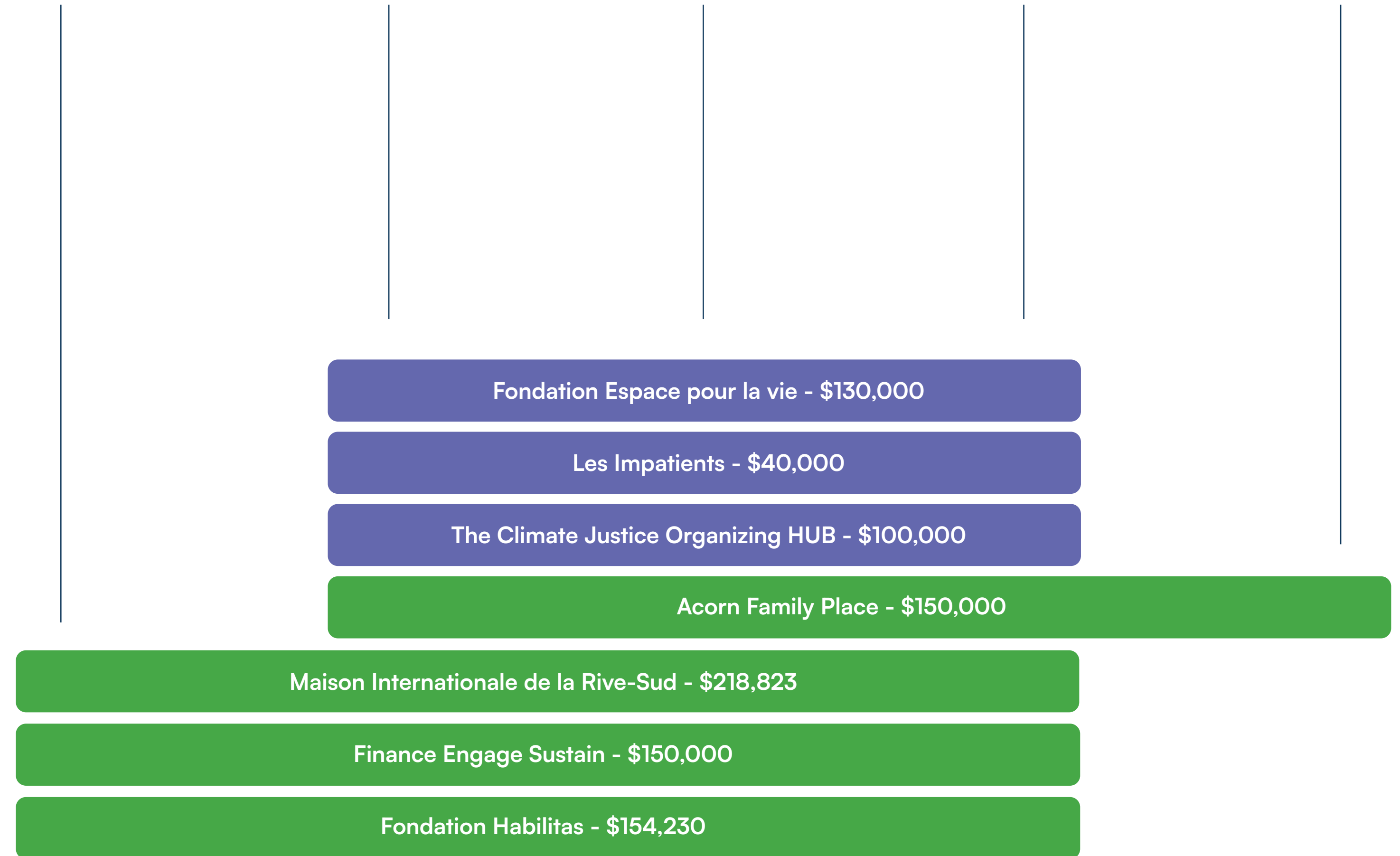
2023

2024

2025

2026

2027



Employee Donations and Emergency Fund

Each year, employees are invited to support causes that matter most to them by selecting an organization to receive a donation from the Foundation.

In 2025, the Employee Donation Fund supported 10 organizations for a total of \$65,000, reflecting employees' commitment to community well-being.

To remain responsive in times of urgent need, the Foundation maintains an Emergency Fund to support rapid, high-impact interventions when communities are facing unexpected crises.

During the year, emergency funding was also deployed to The Canadian Red Cross to support humanitarian relief efforts in response to the forest fires in Manitoba and Saskatchewan.

IN 2025, 11 ORGANIZATIONS WERE SUPPORTED.

Championing Equity

Our JEDI Commitment and Leadership Recognition

Advancing Our JEDI Commitments

In 2025, Chamandy Foundation continued to strengthen its commitment to justice, equity, diversity, and inclusion (JEDI) across its work. An updated internal action plan guides our efforts across organizational practices, governance, grantmaking, communications, and community relationships, ensuring equity remains embedded in our decisions and actions.

Throughout the year, learning and reflection were central to this work, with staff engaging in ongoing conversations around trust-based philanthropy, equitable grantmaking, and sector-wide challenges. We also sought feedback from the organizations we support to better understand their experience and identify opportunities for improvement. Their insights affirmed the value of our trust-based, relational approach while helping inform ongoing refinements to our processes.

These efforts reflect our commitment to continuous learning, accountability, and meaningful collaboration as we work toward more equitable and sustainable community impact.

Leadership Recognition

In 2025, Tiffany Chamandy, President and Executive Director of Chamandy Foundation, was named **one of The Peak's Emerging Leaders in the social impact category**. This recognition highlights her leadership and sustained commitment to advancing social impact and improving outcomes for children and youth across Canada.

Through her leadership, the Foundation continues to advance its mission by supporting community-led initiatives that strengthen opportunities and outcomes for vulnerable children and youth.

Our Dedicated Team and Board

Driving Our Mission Forward

Chamandy Foundation is driven by a dedicated team, Board of Directors and Officer whose collective expertise and commitment advance our mission and strengthen the impact of our work.

TEAM

- + Tiffany Chamandy**
President and Executive Director
- + Kate Brayley**
Operations Manager
- + Christine Vallières**
Grants and Communication Manager
- + Elisia Piperni**
Executive Assistant

BOARD OF DIRECTORS AND OFFICER

- + Glenn J. Chamandy**
Secretary and Director
- + Sergio Scarpelli**
Officer
- + Amel Chamandy**
Director
- + Steven Chamandy**
Director



SINCE 2015

**A Legacy of Impact
Celebrating
a Decade Together**

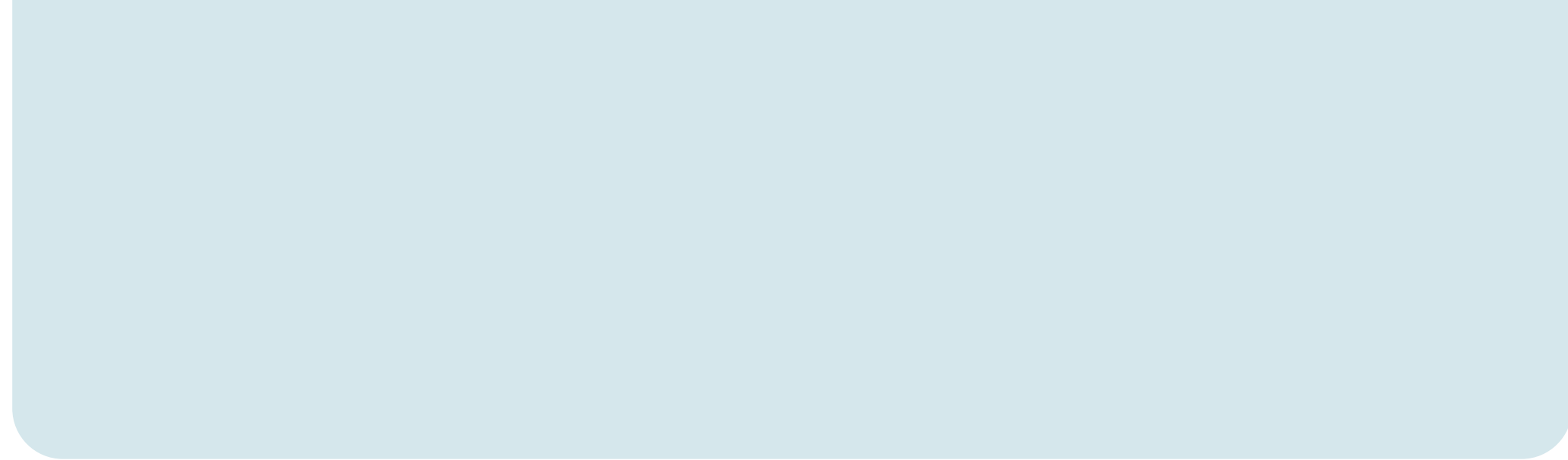
277 grants supporting
206 organizations

3.78 million
people reached
through funded initiatives



\$29.4 million
in philanthropic support
since 2015





Thank You!

To Contact Us

1480 Sherbrooke Street West, 3rd Floor
Montréal Québec H3G 1L3

514 989-5545
info@chamandyfoundation.org
chamandyfoundation.org

Follow Us



Note on the Annual Report : Sections of this annual report were drafted with the assistance of AI. This approach allowed us to efficiently structure ideas and create clear, coherent content that reflects our values and actions.

All content was carefully reviewed, validated, and adapted by our team to ensure accuracy and alignment with the Foundation's mission. This collaboration with AI demonstrates our commitment to exploring innovative solutions for effective communication.

